

Features :

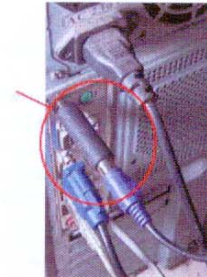
- The device applies to all PS / 2 type keyboard.
- Plug and Play, no need to install any software.
- Entered automatically record the contents of the keyboard.
- The size of a small, easy to install, can not easily be detected.
- No noise, no lights, the computer switch does not affect their work.
- After recording finished off at any one computer to read record
- Records quickly and the remaining available space, delete records, search records of a specific character
- Notepad procedures used can easily operate the device .
- The device after a number of anti-virus software, trojan removal procedure can not be found, the hardware device will not have any display information to ensure an excellent occult,

Uses :

- Parents care about their children
You can use it to understand the situation of children using computers.
- Bosses used to monitor their staff.
Understanding of employees during working hours using the computer.
- Software Engineer
Software engineers can be used to deal with a number of unexpected system failures.
- Network security
Detect unauthorized access to computers, as well as their illegal operation of the computer.
- System administrator
Repair System , Recover the password.
- office
The loss of important documents for the restoration of information

Installation :

This device is very easy to install , Connect one end of the keylogger computer's PS / 2 port, other end to connect the keyboard's PS / 2 cable, keylogger at work does not require any drivers and any software. plug to use, very convenient



How to use :

Keylogger function to set or read the record, you can use any operating system built-in text editor software for their operation. For example, we use the windows system software of the notebook.



1

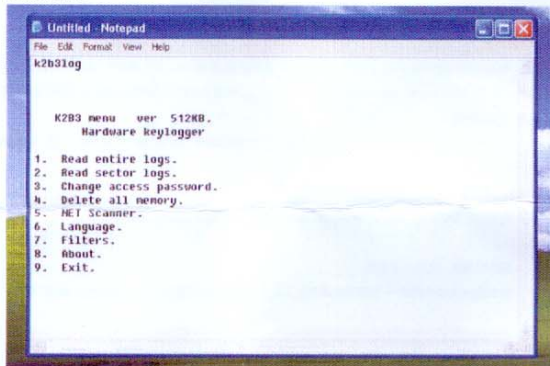
2

First, open Notepad, enter the password

(Default password is " k 2 b 3 l o g " + Enter)

- Enter the password, can not use the numeric keypad to enter numbers, use the top of the main keypad number keys,
- Enter a password, if the password is incorrect, can not be changed, please re-enter the correct password completely

Device menu



- **Note :** If you want to exit, press 9, can not directly close the Notepad, otherwise there will be a keyboard error.

Operation, enter the number of pre- function corresponds to the function that is open.

For example: Enter 1, is to read all the records. (Read entire logs)

Enter 3, is to change the password (Change access password)

The following details the function:

3

4

A. Reading entire memory Enter 1

This option will begin to read all logs from memory

Note: When records are being read, please do not operate the keyboard and mouse

B. Read sector logs Enter 2

All 2M memory is divided on 8 sectors , first sector is sector 0 ,you can read data from just one sector , for example if you want read some data from end of memory you can use this option to don' t wait on reading all earlier logs

C. Change access password Enter 3

In this option you can change password to main menu keylogger .

Default password is "k2b3log" + enter .

Dont use simle password like name because when user enter this string in other program keylogger menu will be activated

D. Delete all memory Enter 4

In this function you can delete all data from all memory

E. Net Scanner Enter 5

This function search all memory and find all www sites witch was enter by user

F. Language Enter 6

Keylogger can write menu in two languages , user can switch the language on other in this function

G. Filter Enter 7

Keylogger has built in hardware function keys and backspace filter

This function is useful when for example childrens are play games using arrows

This can fill memory very fast

Function keys filter is disable keys : from F1 to F12, INSERT,DELETE, HOME, END PAGE UP, PAGE DOWN,and arrows

Function Backspace as B can show when user was use this key and show it as [B].

If function backspace as B if off then every backspace is visible as deleting last key so some text can be not visible if outgoing data.

H. About Keylogger Enter 8

In this function you can find information about keylogger K2B3 model and you can check free memory

I. Exit Enter 9